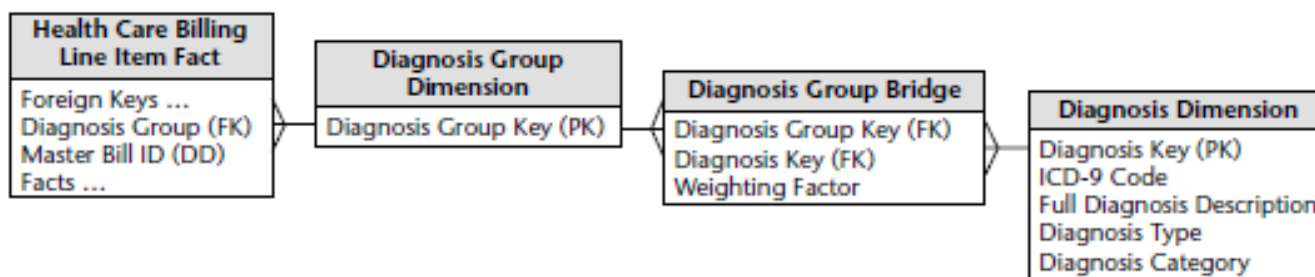


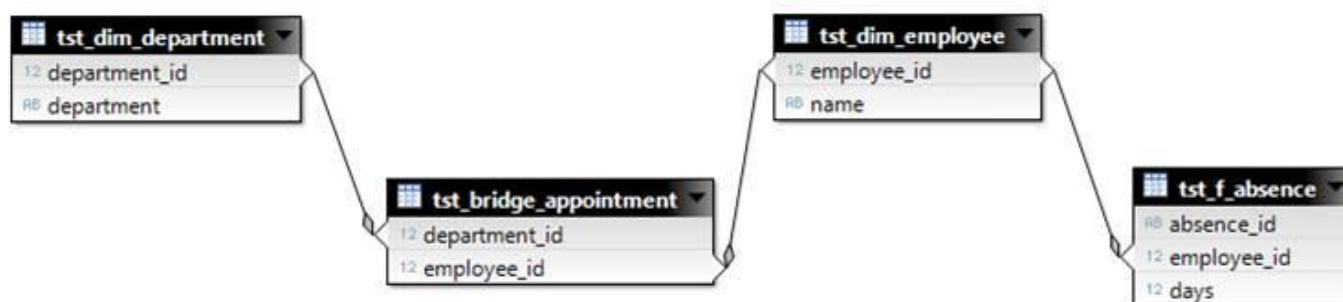
I am having trouble getting a dimensional model using a bridge table to work well in Webi. For the HR department I am working on a data model to report on the sickness absence rates. The complexity comes in when an employee works for two (or more) departments. I have created a simple conceptual data model to represent the situation. The hypothetical situation: **John** is a full-time employee and has a 50% appointment for department **A** and 50% for department **B**. John has two sick leaves adding up to a total of 30 days. I expect to see those 30 days for both departments, but the grant total should show 30 as well.

The **fact\_absence** <> **dim\_department** represents a many-to-many relationship. A department has multiple absence records and an absence record can be related to many departments. I have looked up this situation in "the data warehouse toolkit" by Kimball. This situation is referred to as a "multivalued dimension" - that sounds right - and it is suggested to introduce a bridge table. The following example is used in the book:

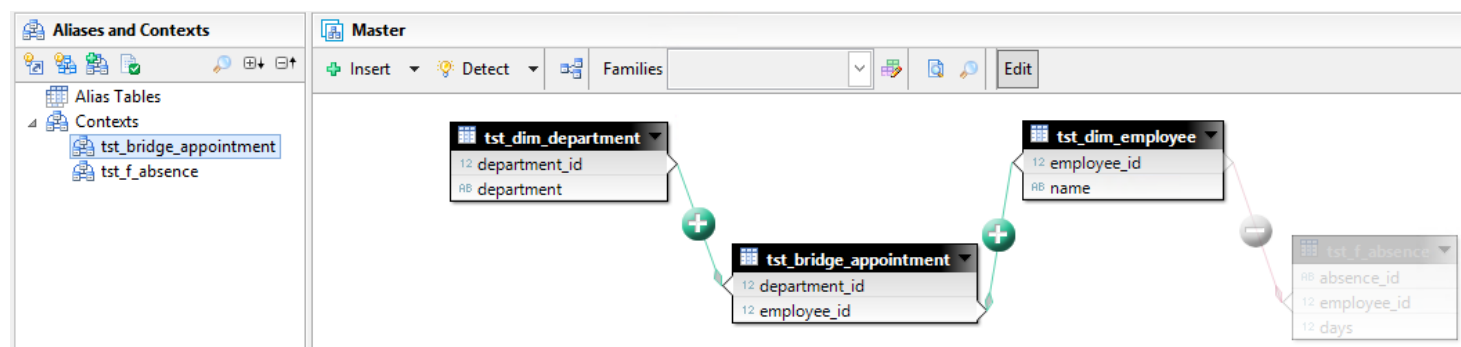


**Figure 13.4** Diagnosis group dimension to create a primary key relationship.

I have translated this solution to my situation with my simple data model:



and defined two contexts:



Finally I included all columns in the business layer and represented the database tables in a Webi report:

Department Id	Department
1	A
2	B

Employee Id	Name
1	John
2	Hank

Department Id	Employee Id
1	1
2	1
2	2

Absence Id	Employee Id	Days
A1	1	10
A2	1	20
A3	2	5

Webi creates two queries, as expected. When I combine all information in one table, Webi seems to process the two queries correctly:

Department	Name	Days	distinct absence
A	John	30	2
B	Hank	5	1
B	John	30	2
	<b>Sum:</b>	<b>35</b>	<b>3</b>

The sickness leave of John is displayed for both departments, but in the sum of all departments, the sick leave is only counted once. So far so good.

Now when I exclude the **Employee Name** column from this report, suddenly Webi seems to be unable to combine the two queries:

Department	Days	distinct absence
A	35	3
B	35	3
<b>Sum:</b>	<b>35</b>	<b>3</b>