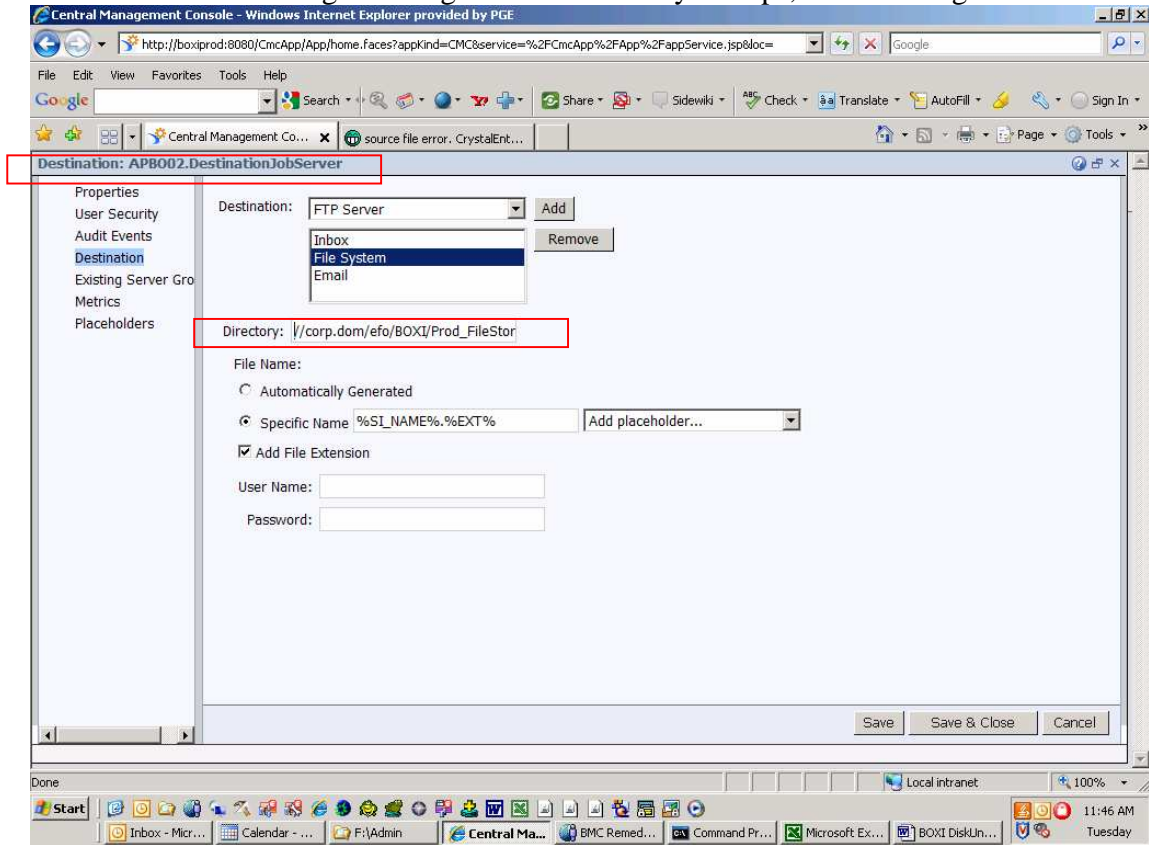


Crystal Reports Job Server Metrics Page. Note, the True|False settings for the Destination types. When I encountered the DiskUnmanaged error, one server had True, one False for Unmanaged Disk Destination.

The screenshot displays the BusinessObjects Enterprise Central Management Console interface. The main window shows the 'Metrics: APB002.CrystalReportsJobServer' page. The 'Metrics' tab is selected in the left-hand navigation pane. The main content area lists various system metrics and their values. A red box highlights the 'Unmanaged Disk Destination Default Settings Valid' setting, which is set to 'true'. Other settings include 'FTP Destination Default Settings Valid' (false), 'Inbox Destination Default Settings Valid' (true), and 'SMTP Email Destination Default Settings Valid' (true). The 'Processing Mode' is set to 'Launch a pool of subprocesses and each will handle one or more requests.' The 'Maximum Jobs Allowed' is 20, and 'Concurrent Jobs' is 0. The 'Received Job Requests' is 7024, and 'Child PIDs' is 'No child processes.' The 'Failed Job Creations' is 1210, and the 'Temporary Directory' is 'E:\BOXI\BusinessObjects Enterprise 12.0\Data\procSched\APB002.CrystalReportsJobServer'. The 'Processing Mode' is 'Launch a pool of subprocesses and each will handle one or more requests.' The 'Unmanaged Disk Destination Default Settings Valid' is 'true'. The 'FTP Destination Default Settings Valid' is 'false'. The 'Inbox Destination Default Settings Valid' is 'true'. The 'SMTP Email Destination Default Settings Valid' is 'true'. The 'Total: 87 objects' is displayed at the bottom right of the main window.

Property	Value
PID	4520
Host Name	APB002.corp.dom
Host IP Address	172.21.144.71
Request Port	1097
Object Type	CrystalEnterprise.Report
Processing Module	procreport
Maximum Jobs Allowed	20
Concurrent Jobs	0
Received Job Requests	7024
Child PIDs	No child processes.
Failed Job Creations	1210
Temporary Directory	E:\BOXI\BusinessObjects Enterprise 12.0\Data\procSched\APB002.CrystalReportsJobServer
Processing Mode	Launch a pool of subprocesses and each will handle one or more requests.
Unmanaged Disk Destination Default Settings Valid	true
FTP Destination Default Settings Valid	false
Inbox Destination Default Settings Valid	true
SMTP Email Destination Default Settings Valid	true

The DestinationJobServer File System configuration is shown below. The default directory is on a file server at: //corp.dom/efo/BOXI/Prod_FileStore/temp. User name and Password are managed through Active Directory Groups, so not configured here.



Individual report configuration. Destination default directory is overridden to become //corp.dom/efo/BOXI/Prod_DMSShare

